

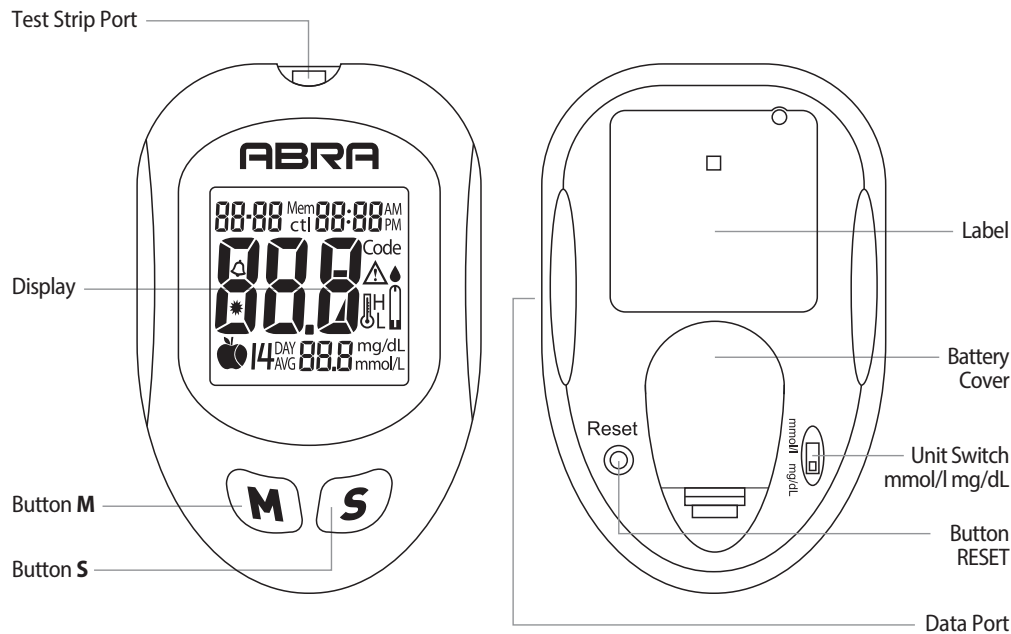
# BLOOD GLUCOSE MONITORING SYSTEM

## QUICK REFERENCE GUIDE

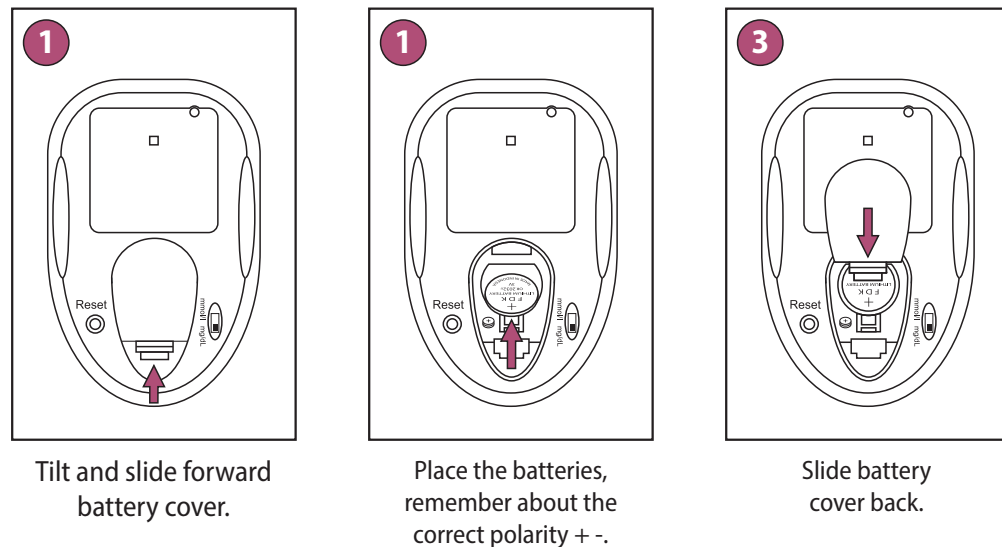
# ABRA

This quick instruction for use will help you to set up and prepare your glucose meter for performing a test. For detailed information, see the Instruction for use included to the set ABRA.

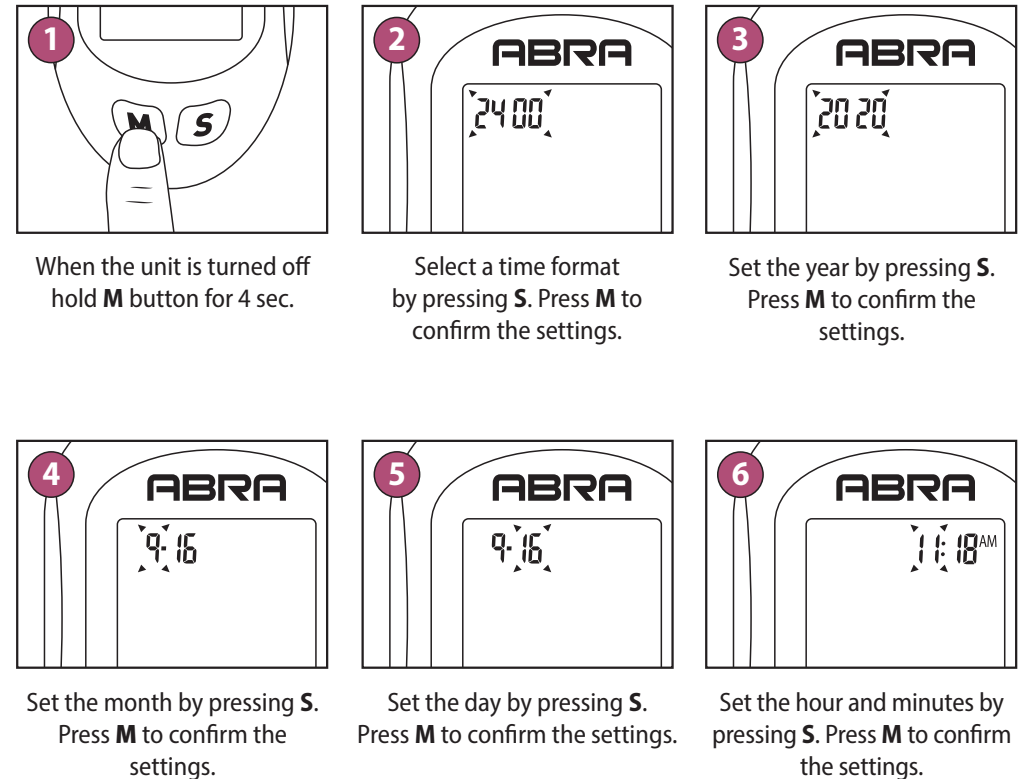
### 1. GLUCOSE METER DESCRIPTION



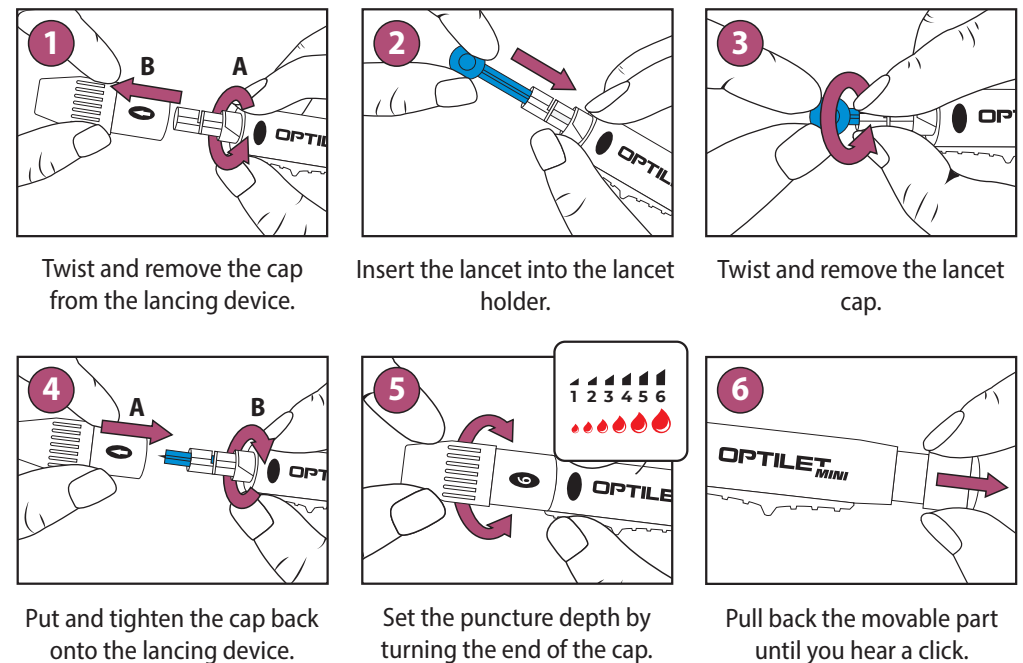
### 2. STARTING THE DEVICE



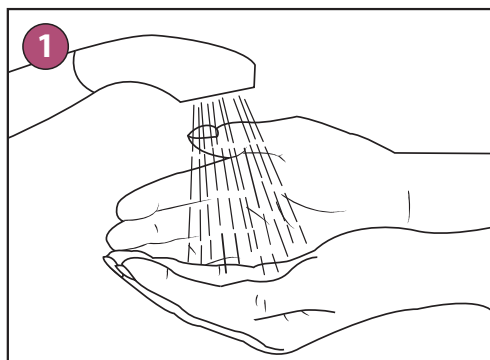
### 3. SETTING THE DATE AND TIME



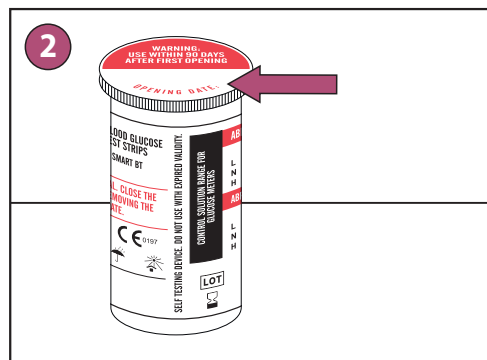
### 4. PREPARING THE LANCING DEVICE



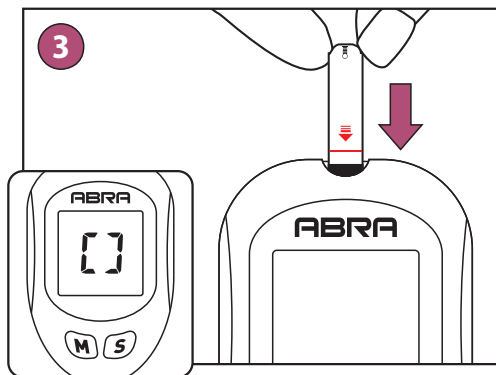
## 5. PERFORMING A TEST



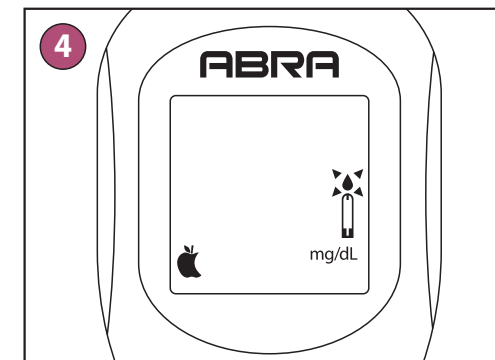
Before performing the test, wash your hands thoroughly and dry them.


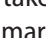
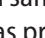


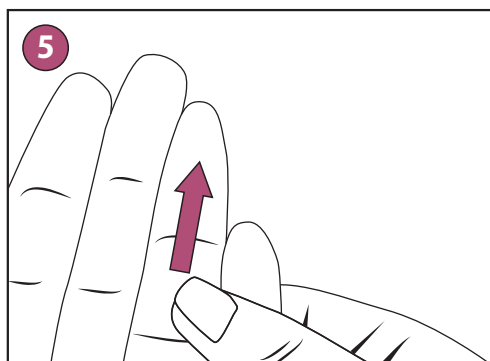
Put down the date when the vial has been firstly opened. Remove the strip from vial and tightly seal the cap. Put down the date of the first vial opening.



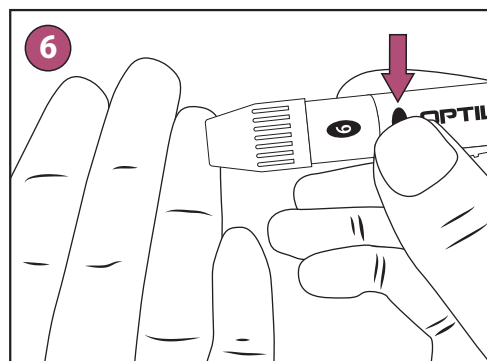
Insert a test strip. You will hear the beep sound and moving lines will appear on the display.



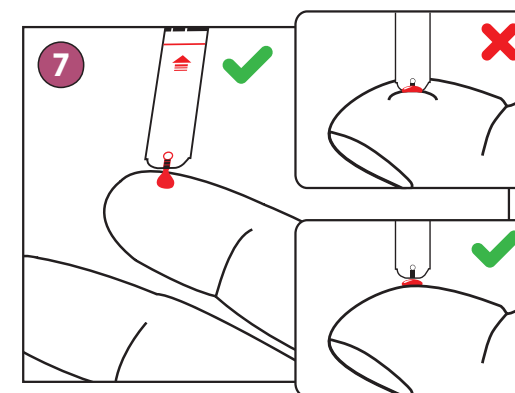
A flashing  means that the device is ready to take a blood sample. Use **M** button to mark a test as pre-meal  or post-meal .



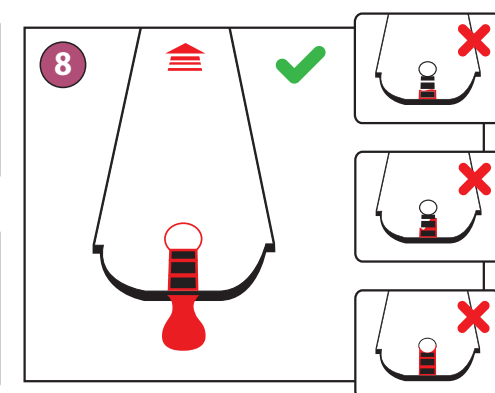
Massage vigorously the place of blood sampling.



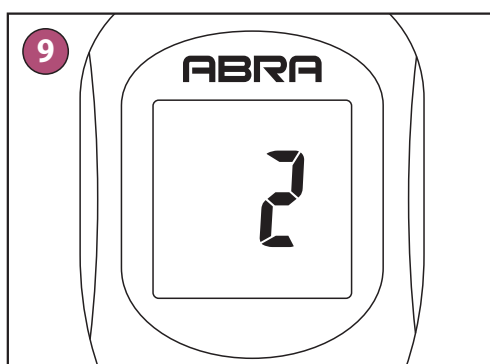
Firmly press the lancing device to the fingertip and press the release button. Click sound means that the puncture has been performed.



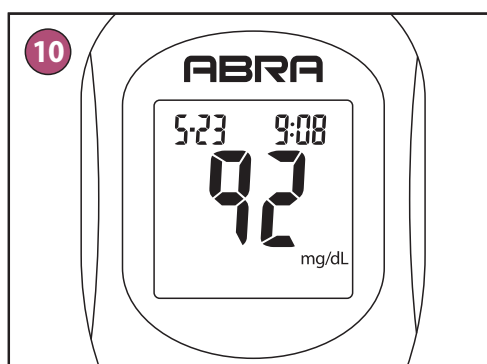
Apply the glucose meter with a strip to a drop of blood. Blood will be automatically sucked into the test strip.



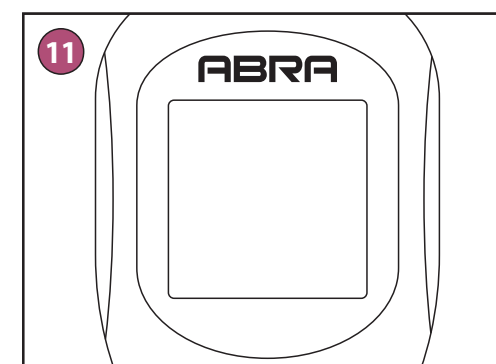
Make sure that the confirmation window is completely filled with blood.



As soon as the confirmation window will be filled with blood, the glucose meter will start counting down from 5 to 1.



Glucose meter will display your result and save it automatically in the memory.



Glucose meter will automatically turn off after removing the test strip.